

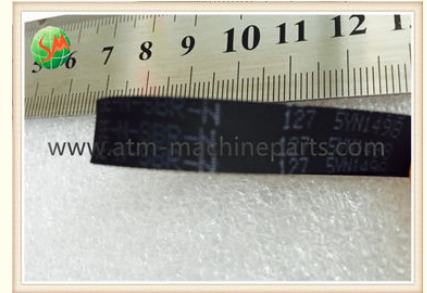


A001600 NMD ATM Parts NF200 10*127*0.65 Short Belt Glory ATM Belts

Our Product Introduction

Basic Information

- Place of Origin: China
- Brand Name: NMD
- Model Number: A001600
- Minimum Order Quantity: 1pc
- Price: Competitive
- Packaging Details: With standard packaging or according to customer's request
- Delivery Time: 1-5 working days after received the payment
- Payment Terms: T/T, Western Union
- Supply Ability: 1000pcs / Month



Product Specification

- P/N: A001600
- Condition: New
- Payment: TT/WU
- Temperature: Normal Temperature
- Environment: Inside
- Highlight: cash machine parts, atm machine parts



Product Description

A001600 NMD ATM Parts NF200 10*127*0.65 Short Belt Glory ATM Belts

1. Quick Details

- A.Weight:0.1KG/pc
 B.Material:Rubber
 C.P/N:A001600
 D.NF200 Belts
 E.Business area:ATM Machine,Spare parts,UPS,Camera



2. Our Service

Price	Exw Price
Shipment term	By Express / Ship / Air
Payment	By T/T / Western Union
Warranty	90 days

GSM is your first choice

1. Supply NCR, Wincor Nixdorf, DIEBOLD, HITACHI,GRG,Glory(NMD) products.
2. Full experience in supplying,manufacturing,maintaining and repairing.
3. Quality testing done before sending out.
4. Large inventory with short lead time.
5. Prompt and in-time after-sales service.

Our company

GSM International Trade Co., Ltd. is mainly doing in ATM field. We are not just doing in trading,we also have our own factories and professional team to develop and produce whole machine and spare parts.

We have built long-lasting relationships with many well-known banking service company. Also,we have sign maintenance contract with few local banks.

Our company plan to launch our own brand of ATM machine and CRS machine in 2017 and commit in integrating market sources and service the global related financial enterprises.

Please feel free to contact us anytime ,we are always ready to serve you!

GSMbanking GSM International Trade Co.,Ltd.

☎ 86-13601126185 ✉ charles@gsmbankinggroup.com 🌐 atm-machineparts.com

Room 1311, No. 555, middle Renmin Road, Liwan District, Guangzhou, China