

S2 Cassettes Latch NCR ATM Parts Gray Color 445-0756222

Our Product Introduction

for more products please visit us on atm-machineparts.com

Basic Information

- Place of Origin: China
- Brand Name: NCR
- Certification: CI CO
- Model Number: NCR S2 Cassettes
- Minimum Order Quantity: 1 piece
- Price: 0.1-1usd/pc
- Packaging Details: Normal packing or as customer's requirements
- Delivery Time: within one week after received the payment
- Payment Terms: T/T, Western Union, Paypal, L/C
- Supply Ability: 1000 pieces/month

GSMbanking



ATM Parts Professional Manufacturer

Product Specification

- Brand Name: NCR
- MOQ: 1 Peice
- Stock Status: In Stock
- Payment: T/T, West Union, Paypal, L/C
- Quality: New Generic
- Shipment: Express/Air/Sea
- Warranty: 90 Days
- Highlight: S2 Cassettes Latch NCR ATM Parts, 445-0756222 NCR ATM Parts

GSMbanking



ATM Parts Professional Manufacturer

More Images

GSMbanking



ATM Parts Professional Manufacturer

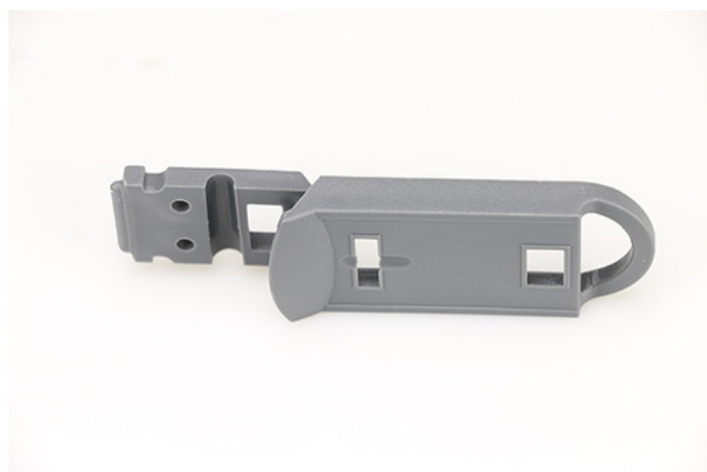
GSMbanking



ATM Parts Professional Manufacturer

Product Description**A:About Product****NCR S2 cassettes Latch New and Have in stock with Gray Color 445-0756222**

Brand Name	NCR
Price	Latch
Quality	New Generic
Stock status	In stock
MOQ	1 Piece
Warranty	90 days
Used in	NCR machine

GSMbanking**ATM Parts Professional Manufacturer****B: About After sale Service**

How should I do if the item doesn't work?	All goods have warranty for 90 days, have any problem, U can share pictures or Videos to us, will help u to deal with it.
Whenever some parts have issue shipping cost is on us or not?	If it's our problem, we will cover the shipping cost, if your mistake, u need to pay the returning shipping cost.

C:About Shipment

DHL	3-6days to arrive
TNT	3-6days to arrive
Fedex	3-6days to arrive
EMS	7-15days to arrive
UPS	3-6days to arrive
Others	By sea or air



D: About Company

Main Market:	America, Western Europe, Eastern Europe, Eastern Asia, Southeast Asia, Middle East, Africa, Oceania, Worldwide
Business Type:	Manufacturer, Distributor/Wholesaler, Exporter, Trading Company, Seller
Brands:	NCR/Wincor/Diebold/NMD/GRG/Hyosung
No. of Employees:	500~1000
Annual Sales:	100000000-300000000
Year Established:	1999
Export p.c:	70% - 80%

GSMbanking



ATM Parts Professional Manufacturer

E: About Service

We are making every endeavour to provide customers with our best quality products and the most competitive price in ATM Field. Along with our professional advice and service, we are confident to comply with every customer's expectation.

Trading service

1. Supply of ATM whole machine and spare parts in various world leading brands, NCR, Wincor Nixdorf, Diebold, Hitachi, Glory(NMD), GRG, Kingteller, Hyosung etc.
2. Manufacture of customized products, ie ATM parts and banking equipment.



ATM Parts Professional Manufacturer



Engineering Service

1. Repairing, maintaining and refurbishing service for ATM equipment and parts.
2. ATM upgrading solution, hardware and software.
3. Technical consultation and training service.

After-sales Service

1. 24 hours in-time and comprehensive after-sales service.
2. Professional and quick online technical support and solutions.
3. Free repair for faulted or damaged product which are under warranty also not caused by human factors.
4. For those products not covered by warranty, competitive price for repair or maintain service are available.

F:Q&A

Q1. Can I have a free sample before place an order?

A: U can have sample first only if u pay for it, usually we will not offer free sample.

Q2.Does your product have a warranty?

A: Yes. Every product has warranty for 3 months.

Q3. Do you have your own factory?

A: Yes. We have our factory, located in Dongguan.

Q4. Can I have a better Price if I buy more?

A: Normally it is 1-5 days after payment, depends the quantity you ordered.

G:Factory Image



ATM Parts Professional Manufacturer



Repairing



Refurbishing



Custom Production

GSMbanking GSM International Trade Co.,Ltd.



86-13601126185



charles@gsmbankinggroup.com



atm-machineparts.com

Room 1311, No. 555, middle Renmin Road, Liwan District, Guangzhou, China