

**49-201100-000A Diebold ATM Parts Opteva Pulley Gear 49201100000A New
And Have in stock**

Our Product Introduction

for more products please visit us on atm-machineparts.com

Basic Information

- Place of Origin: China
- Brand Name: Diebold
- Certification: CI CO
- Model Number: Diebold Pulley Gear
- Minimum Order Quantity: 1 piece
- Price: To be negotiated
- Packaging Details: Normal packing or as customer's requirements
- Delivery Time: within one week after received the payment
- Payment Terms: T/T, Western Union, Paypal, L/C
- Supply Ability: 1000 pieces/month

GSMbanking

**Product Specification**

- Brand Name: Diebold
- P/N: 49201100000A
- Price: Preferable
- MOQ: 1 Piece
- Stock Status: In Stock
- Payment: T/T, West Union, Paypal, L/C
- Quality: New Original
- Used In: Diebold Machine
- Shipping: Within One Week, Upon Completion Of Payment
- Shipment: Express/Air/Sea
- Warranty: 90 Days
- Highlight: Pulley Gear Diebold ATM Parts,
20T Diebold ATM Parts, 49201100000A

GSMbanking

**More Images****Product Description****A:Product Description****ATM Spare Part 20T Flat Belt 49-201100-000A Diebold
Opteva Plastic Pulley Gear 49201100000A**

Brand Name	Diebold
P/N	49201100000A
Price	Competitive
Quality	New Original
Stock status	In stock
MOQ	1 Piece
Warranty	90 days
Used in	Diebold machine

Our Product Introduction



ATM Parts Professional Manufacturer

B: Quick information

With large quantity in stock
Can produce parts as your request
High quantity with Competitive price

C: Packaging and Shipping

1. Packing: With standard packing or according to customer's request.

2. Shipping:

DHL	3-6days to arrive
TNT	3-6days to arrive
Fedex	3-6days to arrive
EMS	7-15days to arrive
UPS	3-6days to arrive
Others	By sea or air



D: Company information

Main Market: North America, South America, Western Europe, Eastern Europe, Eastern Asia, Southeast Asia, Middle East, Africa, Oceania, Worldwide
Business Type: Manufacturer, Distributor/Wholesaler, Exporter, Trading Company, Seller
Brands: GSMBanking
No. of Employees: 500~1000
Annual Sales: 100000000-300000000
Year Established: 1999
Export p.c: 70% - 80%



ATM Parts Professional Manufacturer

E:Why choose us?

Our Service

We are making every endeavour to provide customers with our best quality products with the most competitive price in the industry. Along with our professional advice and service, we are confident to comply with every customer's expectation.

Trading service

1. Supply of ATM whole machine and spare parts in various world leading brands, NCR, Wincor Nixdorf, Diebold, Hitachi, Glory(NMD), GRG, Kingteller, Hyosung etc.
2. Manufacture of customized products, ie ATM parts and banking equipment.

Engineering Service

1. Repairing, maintaining and refurbishing service for ATM equipment and parts.
2. ATM upgrading solution, hardware and software.
3. Technical consultation and training service.

After-sales Service

1. 24 hours in-time and comprehensive after-sales service.
2. Professional and quick online technical support and solutions.
3. Free repair for faulted or damaged product which are under warranty also not caused by human factors.
4. For those products not covered by warranty, competitive price for repair or maintain service are available.



ATM Parts Professional Manufacturer



F:Q&A

Q1. What's the condition of your product?

A: Generally we can provide 4 conditions: new original, new generic, original used and original ref.

Q2. Does your product have a warranty?

A: Yes. Every product have a warranty, normally it is 3 months.

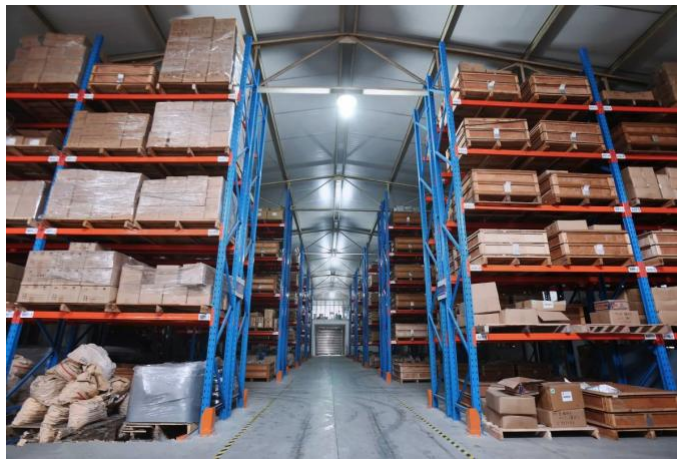
Q3. Do you have your own factory?

A: Yes. We have our factory, located in Dongguan.

Q4. What's the lead time of your product?

A: Normally it is 1-5 days after payment. The lead time is related to the quantity you ordered.

G:Factory Image



445-0728233



445-0689620



445-0610618



445-0751323



445-0612449



445-0732256



Repairing



Refurbishing



Custom Production

GSMbanking GSM International Trade Co.,Ltd.

☎ 86-13601126185

✉ charles@gsmbankinggroup.com

🌐 atm-machineparts.com

Room 1311, No. 555, middle Renmin Road, Liwan District, Guangzhou, China